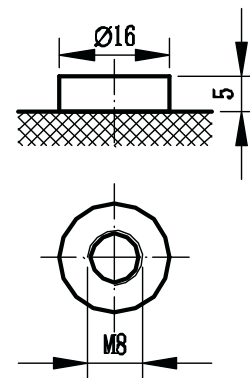
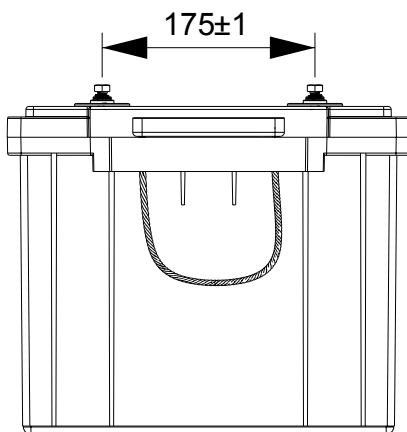
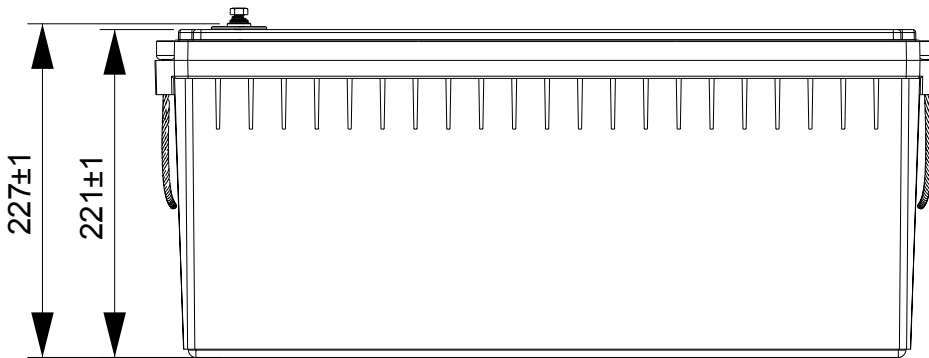
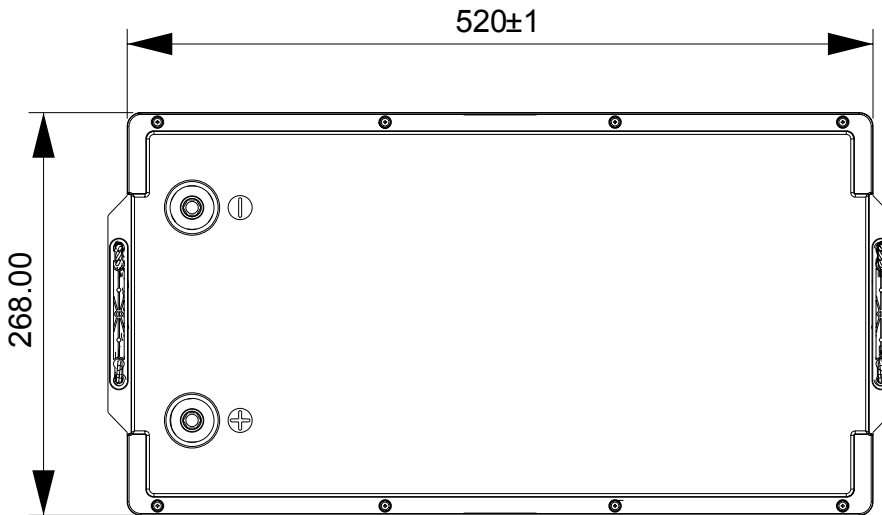


HUB LiON

TECHNICAL DRAWING



LITHIUM
ION BATTERY

HUB-25.6V-200-LFP-8D

BENEFITS AND ADVANTAGES

Start at the Core

- High Reliability
- Fast and Efficient charge/discharge cycles
- Deep Discharge capability
- Fully Recycle capability
- Light weight
- Environmentally friendly
- UL Approved Cells
- Safety UN38.3 approved
- UN3480, CLASS 9

www.hubpower.ca

4238 Lozells Ave #114 Burnaby, BC V5A 0C4

Phone: (604) 420-7737

Email: sales@hubpower.ca

ELECTRICAL SPECIFICATIONS

Nominal Voltage	25.6V
Amp Hour Capacity	200AH
Reserve Capacity @ 25A	480 min
Energy Density	5120Wh
Resistance - Milliohms	< 5
Efficiency - round trip	> 99.5%
Self Discharge per Month	< 3%
**No series connections	n/a
**Max 16 - parallel connections	200-3200AH

**DO NOT configure series and parallel connections simultaneously

TEMPERATURE SPECIFICATIONS

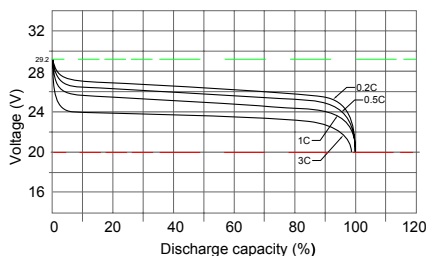
Discharge Temperature	(-20 to 60C)
Charge Temperature	(-20 to 45C)
Storage Temperature	(-5 to 35C)
BMS High Temp Cut Off	80C
BMS Reconnect Temp	50C

CHARGE SPECIFICATIONS

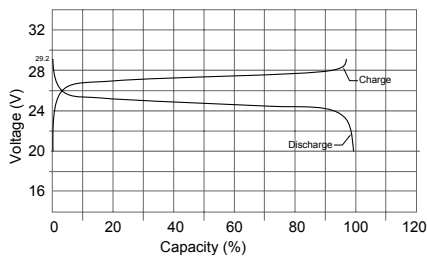
Recommend Charge current	10A - 100A
Max Charge current	100A
Charge current (0 to -10C)	<0.1C
Charge current (-20 to -10C)	<0.05C
Recommended Charge voltage	28.4 - 29.2V
BMS High voltage disconnect	30.0V
BMS High voltage reconnect	29.2V
Balancing voltage	≥3.2V@cell

PERFORMANCE CHARACTERISTICS

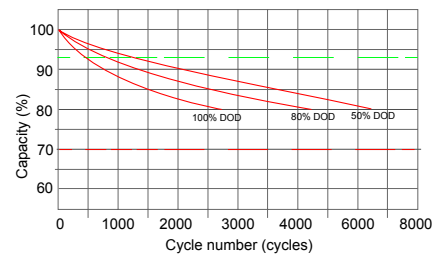
Discharge performance with different rate @ 25°C



Charge & Discharge curve with 1C @ 25°C



Cycle life with DOD @ 0.5C 25°C



DISCHARGE SPECIFICATIONS

Max Cont Discharge current	200A
Peak Discharge Current	600A
BMS Current Cut Off (10S)	>240A
BMS Current Cut Off (3S)	>300A
BMS Current Cut Off (1S)	>600A
BMS Low Voltage Cut Off	17.6V
BMS Low Reconnect Voltage	24V

MECHANICAL SPECIFICATIONS

Dimensions	20.47 x 10.55 x 8.93 in
L x W x H	520 x 268 x 227 mm
Weight	86.47lbs (39.2KG)
Terminal Type	M8
Terminal Torque	90 in lbs (10NM)
Case Material	ABS
Case IP Rating	IP56
Cell Type - Chemistry	LiFePO4
Cell Type	Prismatic

HEATING CIRCUIT

Operating Range	(-20 to 5C)
Heating Circuit Engages at	≤ -1C
Heating Circuit Disengages at	+5C

SAFETY TESTED

Safety Ratings	CB / CE UN38.3 @ cell UL1973 @ cell
Shipping Classification	UN3480, CLASS 9