

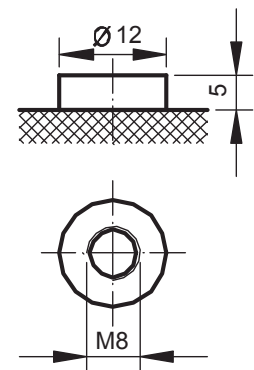
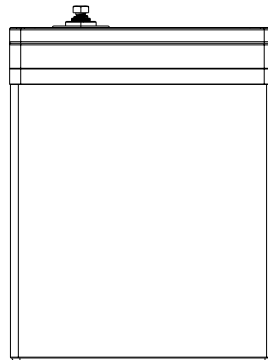
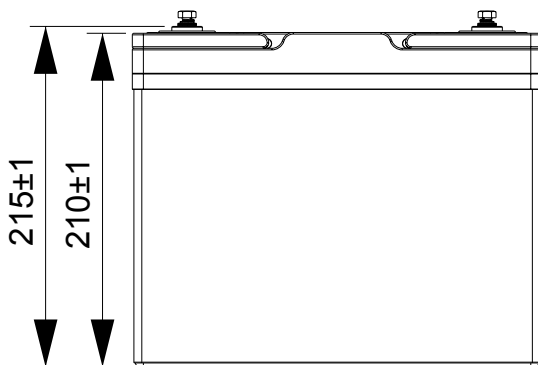
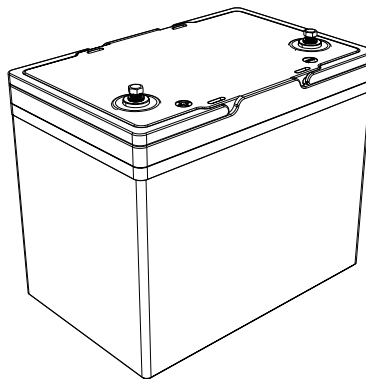
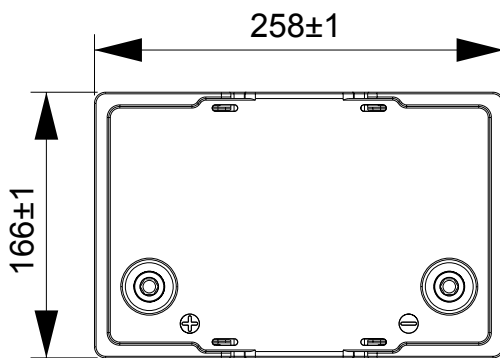
# HUB LiION



LITHIUM  
ION BATTERY

HUB-12.8V-100-LFP-24

## TECHNICAL DRAWING



## BENEFITS AND ADVANTAGES

### Start at the Core

- High Reliability
- Fast and Efficient charge/discharge cycles
- Deep Discharge capability
- Fully Recycle capability
- Light weight
- Environmentally friendly
- UL Approved Cells
- Safety UN38.3 approved
- UN3480, CLASS 9

[www.hubpower.ca](http://www.hubpower.ca)

4238 Lozells Ave #114 Burnaby, BC V5A 0C4

Phone: (604) 420-7737

Email: [sales@hubpower.ca](mailto:sales@hubpower.ca)

## ELECTRICAL SPECIFICATIONS

|                                 |            |
|---------------------------------|------------|
| Nominal Voltage                 | 12.8V      |
| Amp Hour Capacity               | 100AH      |
| Reserve Capacity @ 25A          | 240 min    |
| Energy Density                  | 1280Wh     |
| Resistance - Milliohms          | < 15       |
| Efficiency - round trip         | > 99.5%    |
| Self Discharge per Month        | < 3%       |
| **Max 4 - series connections    | 12-48V     |
| **Max 16 - parallel connections | 100-1600AH |

\*\*DO NOT configure series and parallel connections simultaneously

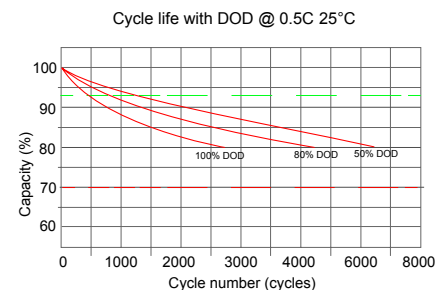
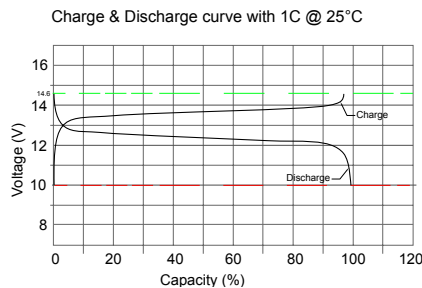
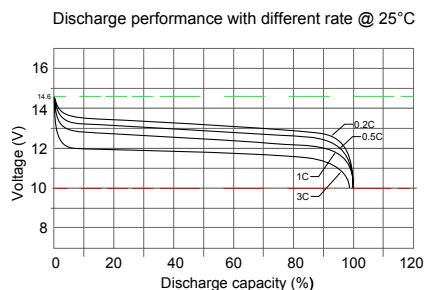
## TEMPERATURE SPECIFICATIONS

|                       |              |
|-----------------------|--------------|
| Discharge Temperature | (-20 to 60C) |
| Charge Temperature    | (-20 to 45C) |
| Storage Temperature   | (-5 to 35C)  |
| BMS High Temp Cut Off | 95C          |
| BMS Reconnect Temp    | 75C          |

## CHARGE SPECIFICATIONS

|                              |              |
|------------------------------|--------------|
| Recommend Charge current     | 10A - 50A    |
| Max Charge current           | 100A         |
| Charge current (0 to -10C)   | <0.1C        |
| Charge current (-20 to -10C) | <0.05C       |
| Recommended Charge voltage   | 14.2 - 14.6V |
| BMS High voltage disconnect  | 14.8V        |
| BMS High voltage reconnect   | 14.0V        |
| Balancing voltage            | ≥3.50V/cell  |

## PERFORMANCE CHARACTERISTICS



## DISCHARGE SPECIFICATIONS

|                              |                    |
|------------------------------|--------------------|
| Max Cont Discharge current   | 100A               |
| Peak Discharge Current 3C    | 300A               |
| BMS Current Cut Off (10S)    | >105A              |
| BMS Current Cut Off (3S)     | >210A              |
| BMS Short Circuit Protection | Load Short circuit |
| BMS Low Voltage Cut Off      | 9.6V               |
| BMS Low Reconnect Voltage    | 12V                |

## MECHANICAL SPECIFICATIONS

|                       |                       |
|-----------------------|-----------------------|
| Dimensions            | 10.15 x 6.53 x 8.46in |
| L x W x H             | 258 x 166 x 215mm     |
| Weight                | 21.62lbs (9.80KG)     |
| Terminal Type         | M8                    |
| Terminal Torque       | 90 in lbs (10NM)      |
| Case Material         | ABS                   |
| Case IP Rating        | IP65                  |
| Cell Type - Chemistry | LiFePO4               |
| Cell Type             | Prismatic             |

## HEATING CIRCUIT

|                               |             |
|-------------------------------|-------------|
| Operating Range               | (-20 to 5C) |
| Heating Circuit Engages at    | ≤ -1C       |
| Heating Circuit Disengages at | +6C         |

## SAFETY TESTED

|                         |                                           |
|-------------------------|-------------------------------------------|
| Safety Ratings          | CB / CE<br>UN38.3 @ cell<br>UL1973 @ cell |
| Shipping Classification | UN3480, CLASS 9                           |