

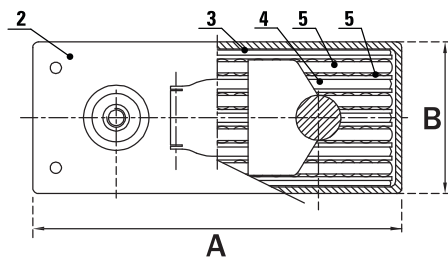
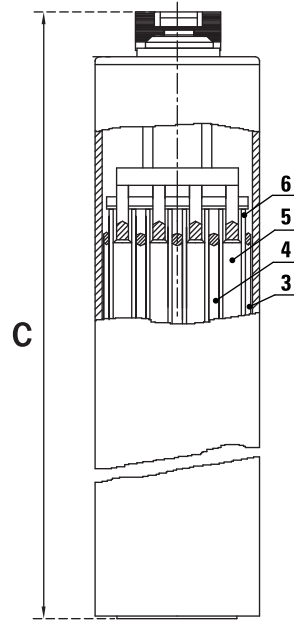
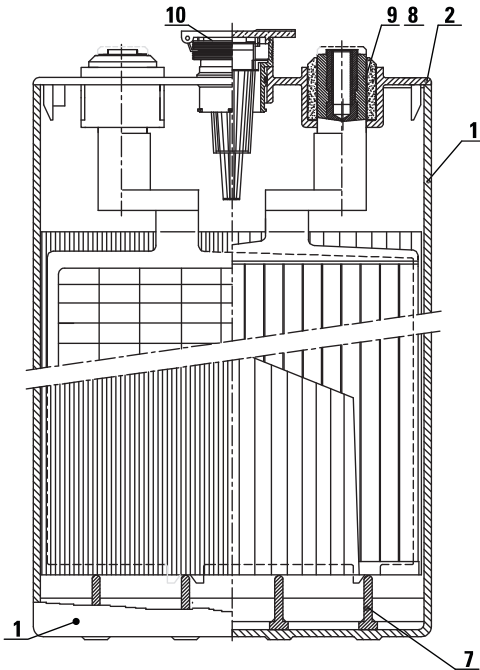
TS50-7

DATASHEET

'TS' SOLAR SERIES

Tubular Flooded Technology

MECHANICAL DRAWINGS



1	Container
2	Cover
3	Negative Grid 1/2
4	Negative Grid 1/1
5	Positive Grid
6	Separator
7	Rib
8	Terminal / Pole
9	Rubber Gasket
10	Filler / Inspection Cap

Long Service Life

- Longer life expectancy; up to 15 years or more in cycling applications.
- Industry leading cycle life, up to 20% greater than flat plate types
- 7 year warranty of which the first 3 years is free replacement). Up to 10 year warranty is available.

Performance and Reliability

- Tubular woven gauntlet for positive elements prevents shedding of active material, exceeding industry standards
- Positive tubular plates allow for superior electrolyte interaction with active material.
- Polyester tubes contain additional acrylic resin along their sides to prevent side short circuits.

Maintenance and Optimization

- Copper terminal connectors, conforming to international accepted standards, isolated with a rubber gasket.
- Virtual elimination of terminal corrosion.
- Terminal studs come with an insulated hexagon head, and an inspection point for voltage measurement as required.
- Optional centralized filling systems.

Safety

- Optional, protected cable system with an IP 25 rating, for safety and electrical protection.
- Best possible protection against short circuits of battery terminal area.
- The fully isolated design of the battery terminals, terminal studs and fully isolated copper interconnects ensure no transient current on battery surface.

Certified Quality

- Manufactured in accordance with ISO 14001 and ISO 9001.

MECHANICAL SPECIFICATIONS		
Length (A)	7.8 in	198 mm
Width (B)	5.39 in	137 mm
Total Height (C)	11.42 in	290 mm
Weight	41.18 lb	18.68 kg
Terminal	M10	
Poles	2	
Cell(s)	1	
Container	PP	

ELECTRICAL SPECIFICATIONS		
Voltage	2 V	
Cycle Life	20% DOD	5000 cycles
	50% DOD	3000 cycles
	80% DOD	1500 cycles
Maximum Operating Temperature	-40°C (-40°F) 50°C (122°F)	
Electrolyte	1.275 S.G.	
Cell Capacity	20 HR	430 AH
	5 HR	350 AH

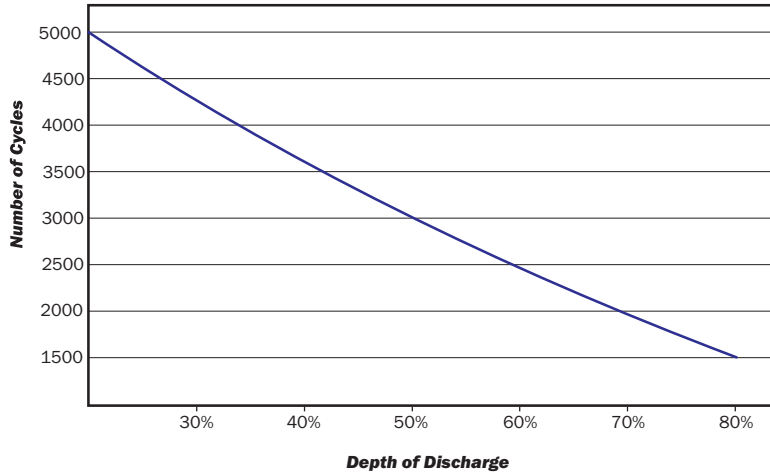
CHARGE PROFILE	
Bulk/Absorption	2.45 - 2.50 Vpc
Float	2.275 Vpc
Equalize	2.65 Vpc
Temperature Compensation	-0.003Vpc / °K

NOTE: Electrical specifications are based on 20°C / 68°F temperature.

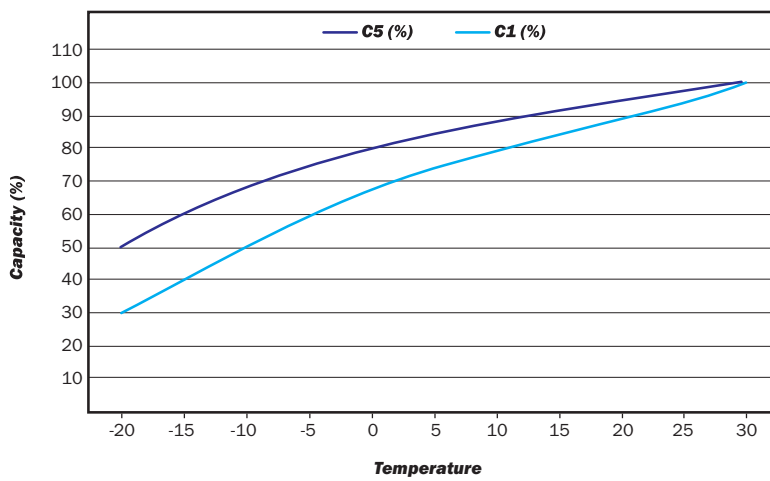
'TS' SOLAR SERIES

Tubular Flooded Technology

EXPECTED NUMBER OF CYCLES IN RELATION TO DEPTH OF DISCHARGE



CAPACITY IN RELATION TO THE TEMPERATURE



SELF-DISCHARGE CHARACTERISTICS

